

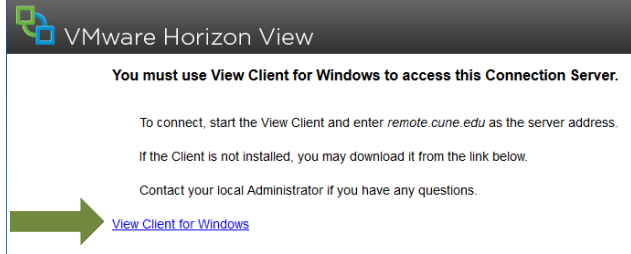
Download and Install the VMware View Horizon Client Example

The following is an example installation for a typical computer running Windows 7 64 bit. The actual steps may vary slightly for each installation.

First follow the link below to access the VMware Horizon View Client download page:

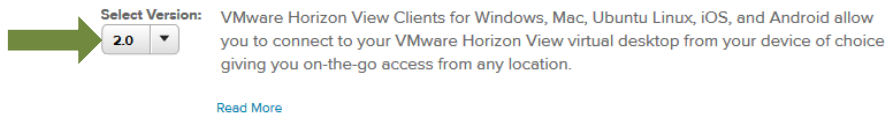
remote.cune.edu

When the page loads click the link titled "View Client for Windows".



Select version 2.0.

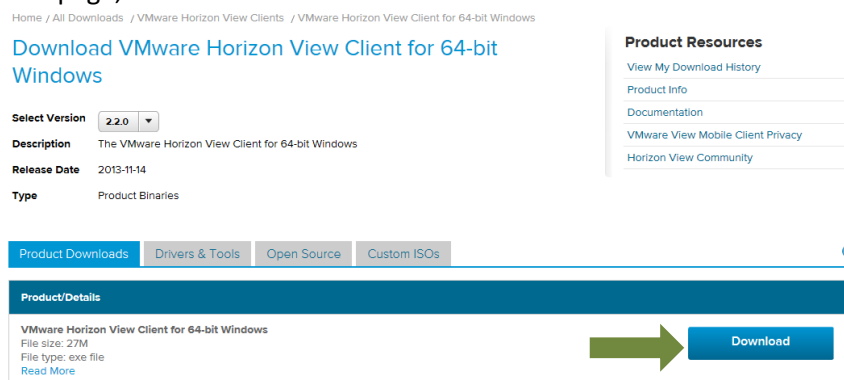
Download VMware Horizon View Clients



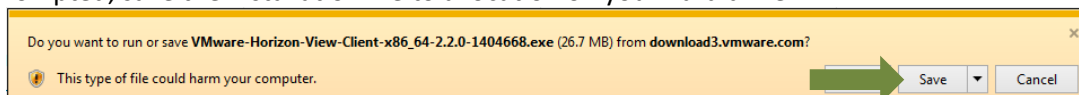
Select the "Go to Downloads" link for the operating system that will be used. In this case, the 64-bit Windows version. Note that you do NOT need the version that contains the Local Mode Option.

Product	Release Date	
VMware Horizon View Client for Windows		
VMware Horizon View Client for 32-bit Windows	2013-11-14	Go to Downloads
VMware Horizon View Client for 64-bit Windows	2013-11-14	Go to Downloads
VMware Horizon View Client for Windows with Local Mode Option		
VMware Horizon View Client for 32-bit Windows with Local Mode Option	2013-07-11	Go to Downloads
VMware Horizon View Client for 64-bit Windows with Local Mode Option	2013-07-11	Go to Downloads
VMware Horizon View Client for Mac		
VMware Horizon View Client for Mac	2013-11-14	Go to Downloads

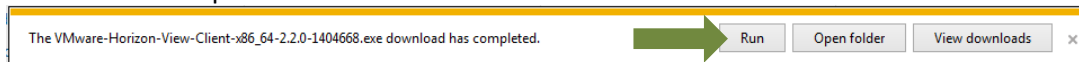
On the next page, click the Download button.



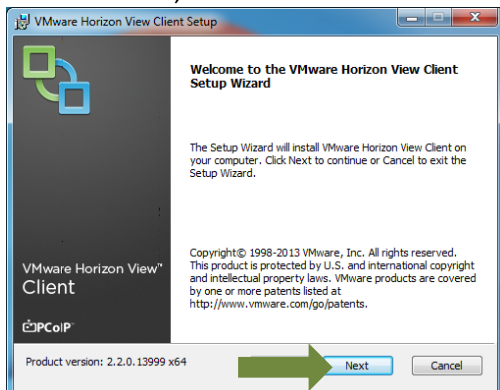
When prompted, save the installation file to a location on your hard drive.



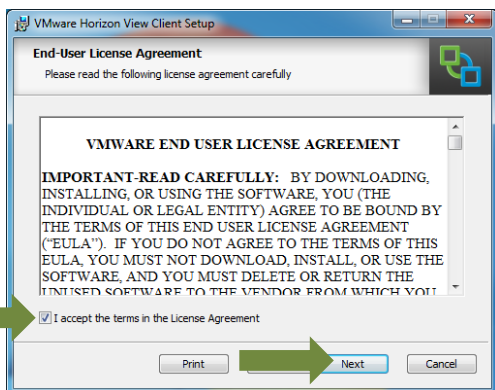
When the download completes run the installer.



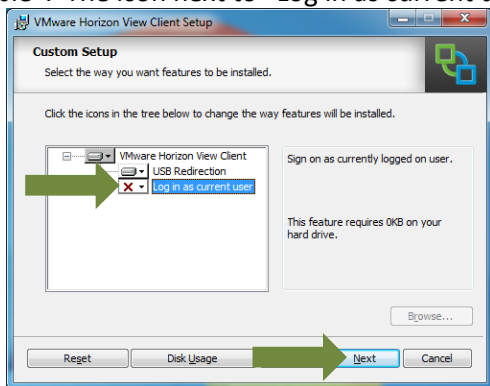
In order to run the setup program, you will need to have Administrative privileges on the Windows computer. When the setup wizard launches, click "Next".



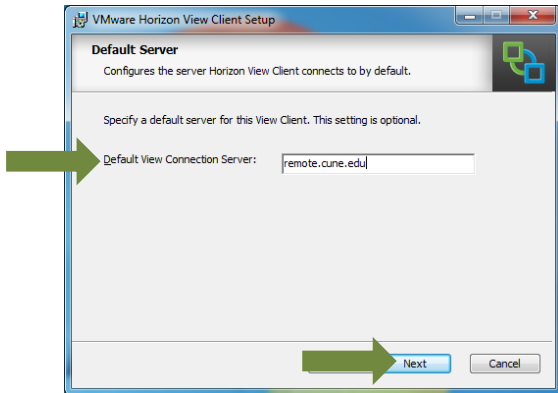
If you agree to the End-User License Agreement, check the box to accept the terms of the License Agreement and click "Next".



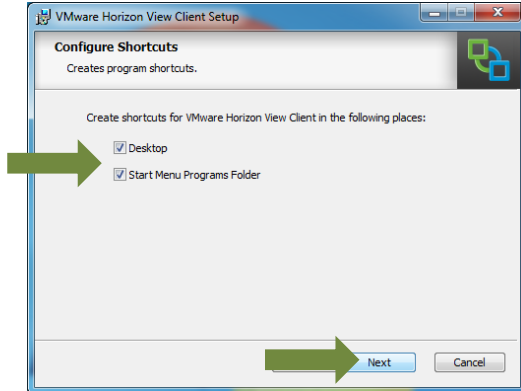
On the next screen, select the drop down menu next to "Log in as current user" and select "Entire feature will be unavailable". The icon next to "Log in as current user" should change to a red X. Then click "Next".



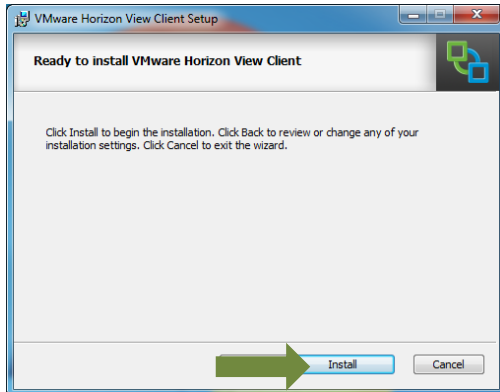
Enter the **remote.cune.edu** as the name of the Default View Connection Server and click “Next”.



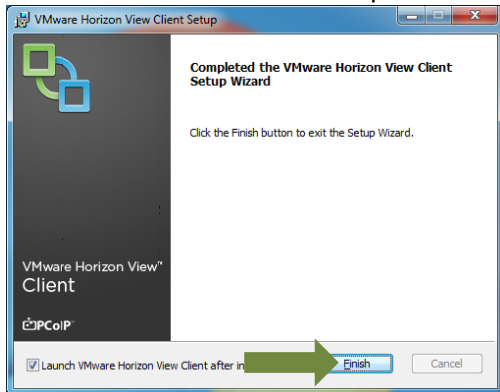
Choose to create shortcuts on the Desktop and/or in the Start Menu and then click “Next”.



Click “Install” to start the installation.



Click “Finish” and then restart the computer before using the program.



Once the software is installed return to the instructions for “Connecting to a CUNE Virtual Computer from off Campus”